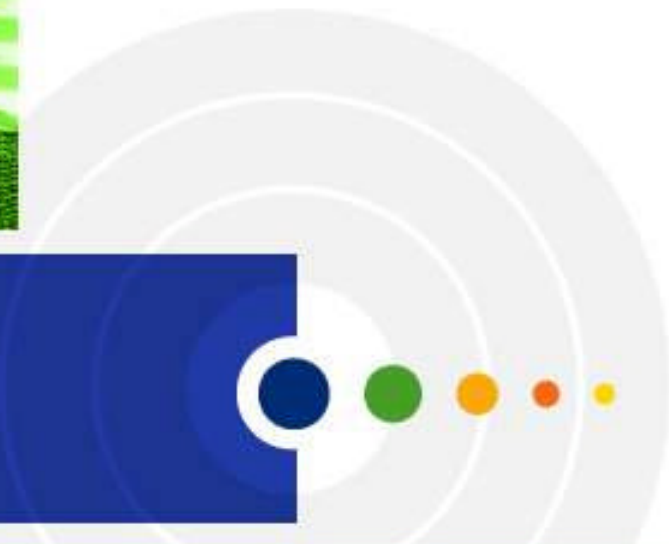




# BreezeMAX Overview

## MTC – Lima 03/06



**Daniel Zejerman**  
**Director of Sales**

This presentation may contain forward-looking statements within the meaning of the “safe harbor” provisions of the Private Securities Litigation Reform Act of 1995. Forward-looking statements may be identified by, among other means, the use of the terms “shall”; “will”; “may”; “might”; “could”; “should”; “anticipate”; “expect” (or variations of any of such terms) or by reference to the possibility, expectation or lack of expectation that specified circumstances or events may occur in the future. Forward-looking statements are based on the current expectations or beliefs of Alvarion’s management and are subject to a number of factors and uncertainties that could cause actual results to differ materially from those described in the forward-looking statements. The following factors, among others, could cause actual results to differ materially from those described in the forward-looking statements: an inability to further identify, develop and achieve success for new products, services and technologies; increased competition and its effect on pricing, spending, third-party relationships and revenues; an inability to establish and maintain relationships with commerce, advertising, marketing, and technology providers; a failure to satisfy conditions to the obligations of other persons to Alvarion; a failure of other persons to satisfy their obligations to Alvarion; and other risks and contingencies described or referred to from time to time in filings with the Securities and Exchange Commission. Alvarion disclaims any duty to update such forward-looking statements.

- **Worldwide leader in wireless access**

- Over 30% market share of global BWA market
- Largest installed base - over 2,000,000 units deployed in more than 130 countries
- Forefront of wireless standards & leadership from 802.11 to 802.16e
- Providing solutions for extending mobile coverage and specialized CDMA and next generation networks



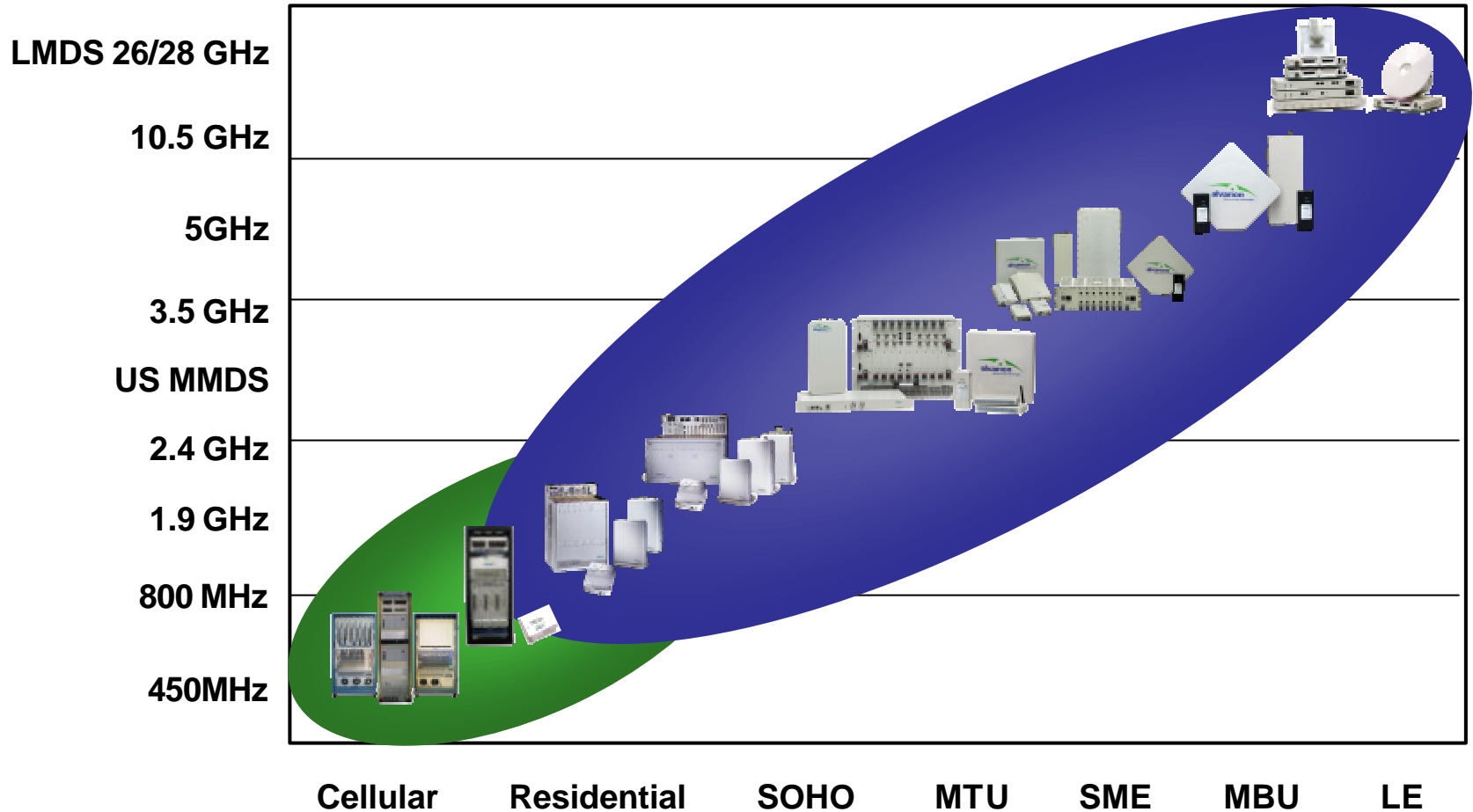
- **Local presence in 23 locations:**

- Australia, Brazil, China, Czech Republic, France, Germany, Hong Kong, Ireland, Israel, Japan, Mexico, Nigeria, Philippines, Poland, Romania, Russia, Singapore, South Africa, Spain, UK, Uruguay, USA (California and Florida)

- **Employees:** with around 400 in R&D

- **Established: 1992**

## Alvarion Product Portfolio – Total Coverage



Mobile - WiMAX \$20B

Fixed - WiMAX \$1-2B

Fixed BWA \$500M



1

**BreezeMAX**







**July 2005**

**Commercial availability of BreezeMAX PRO CPE with Intel® PRO/Wireless 5116 chip with voice, data and WiFi interfaces**

**June 2005**

**Live showcase of BreezeMAX Si - self install CPE with Intel® PRO/Wireless 5116 chip**

**May 2005**

**BreezeMAX: The most widely deployed WiMAX-ready platform in more than 30 countries and with over 100 operators**

**April 2005**

**First vendor to showcase WiMAX-ready CPE with integrated Intel® PRO/Wireless 5116 chip in WiMAX Forum labs**

**June 2004**

**BreezeMAX 3500 commercial launch**

**July 2003**

**Announcement of Intel/Alvarion strategic collaboration for development of WiMAX chip (Intel) & system (Alvarion)**

## 1st Commercial WiMAX-ready System Worldwide

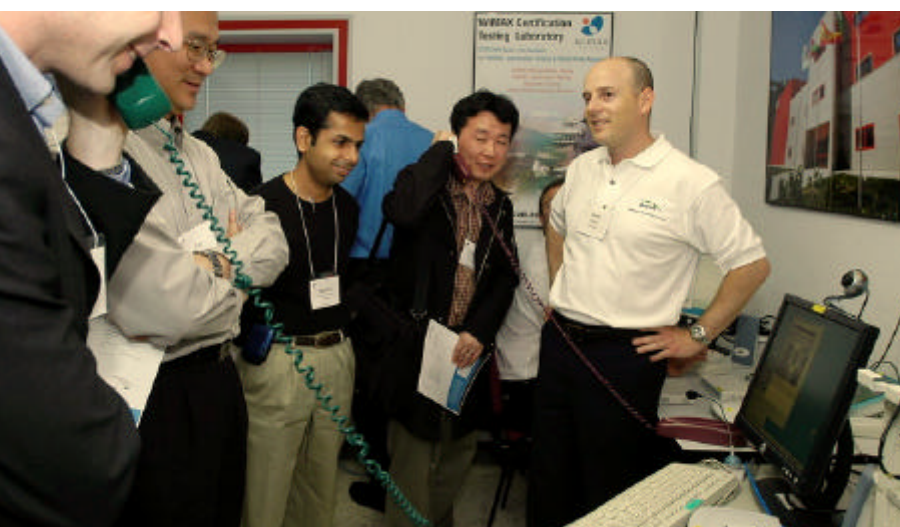




# April 2004 - Live Demo in Cetecom Labs

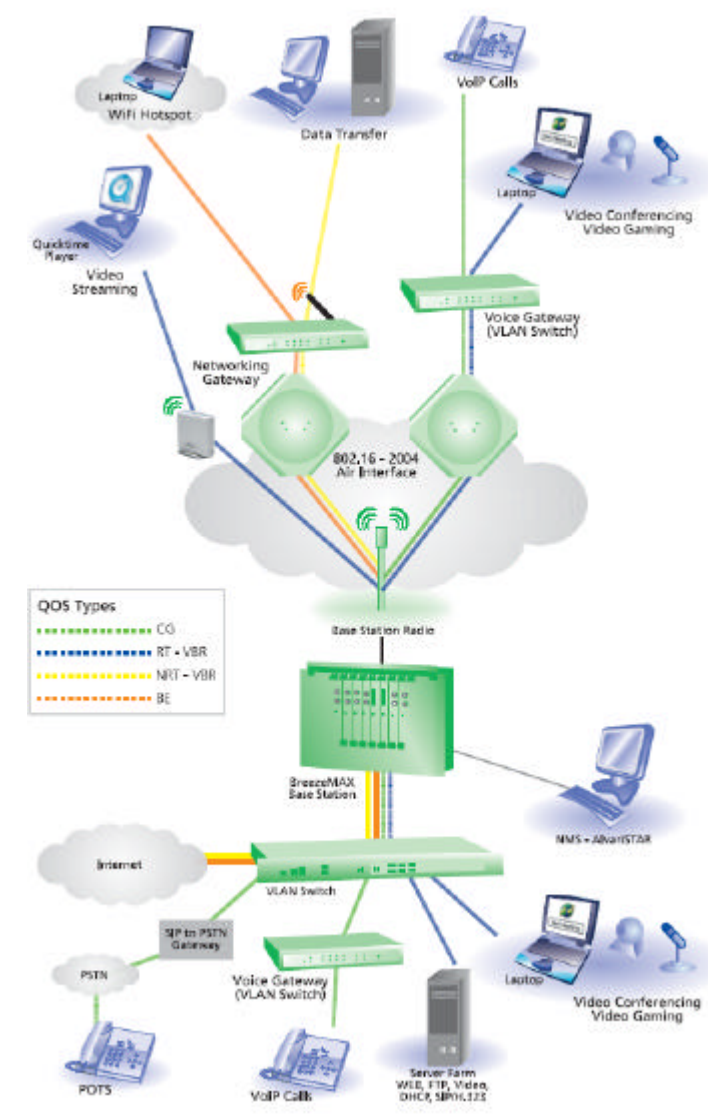


**First vendor to showcase CPE with integrated Intel® PRO/Wireless 5160 in WIMAX Forum official lab (Cetecom)**





- Live showcase of BreezeMAX Si – indoor self install CPE with integrated Intel® PRO/Wireless 5116 chip
- WiMAX-ready base station and CPE
- Triple play services: data, voice, video
- Live voice and video conference





- Our new BreezeMAX CPE, powered by Intel's PRO/Wireless 5116 broadband interface chip
- First step towards WiMAX improved CPE economics
- The BreezeMAX PRO CPE will be submitted to WiMAX certification process
- The BreezeMAX PRO CPE seamlessly integrates into existing BreezeMAX networks





2

## Success Stories (Videos)

## We take pride in our leading wireless broadband operators

